

## **HOMeward BOUND**

### **APPLICATION TIPS**

- Allow adequate time to prepare and upload your application.
- You can prepare for your answers by viewing the questions found in the application form or use the questions in the next page. You can save your progress via the Submittable platform.
- Prepare your responses within the specified word counts.

## **APPLICATION STAGES**

### **PART A: PERSONAL INFORMATION**

This includes your contact information, as well as information that will help us to ensure we are selecting a diverse cohort of applicants.

1

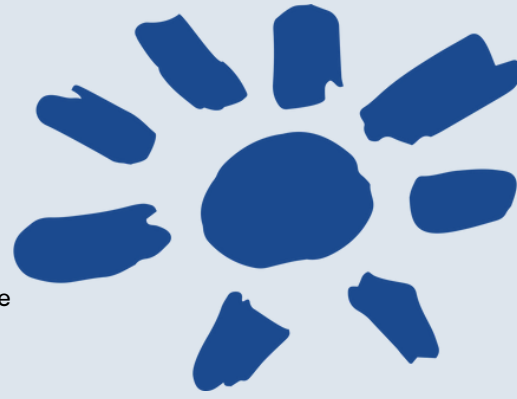
In order to ensure program accessibility and inclusivity, you are asked to complete a separate health information form if you have any significant, chronic and/or recurring mental and/or physical health conditions, or require special assistance to participate in the program.

### **PART B: YOUR CURRICULUM VITAE**

In this section, we require you to attach a 2-page curriculum vitae.

In addition, we ask you to answer the following questions:

1. Briefly describe below your leadership experience to date, including who you lead/have led, whether teams or individuals or projects (200 words or less).
2. Based on your CV, summarise 3 highlights of your career and how you achieved them (200 words or less).



## PART C: YOUR APPLICATION

We want to know about you and what makes you the best possible candidate to be a part of this extraordinary program.

### Step One: You are required to answer the following questions:

1. Why are you suitable for the Homeward Bound initiative? (200 words or less)
2. This I believe about leadership...(your view/approach; 100 words or less)
3. Right now, what do you think you need to learn as a leader? (100 words or less)
4. In the context of your STEMM background, how do you think your leadership could potentially influence the future sustainability of our planet? (100 words or less)
5. What form of feedback elicits the most constructive response from you? (100 words or less)
6. How would you rate your ability to receive constructive feedback? (1= not at all able; 5 = extremely able)
7. How would you rate your ability to give constructive feedback? (1 = not at all able; 5 = extremely able)
8. Please describe your capacity to overcome challenges/difficult situations; reflect on what this tells us about you, your coping skills and how you use them. Feel free to use specific examples. (200 words or less)
9. Describe how you create/foster networks and collaboration. (100 words or less)
10. Describe how you would contribute to Homeward Bound achieving its vision of a global, visible collaboration of women leading for the greater good. (100 words or less)
11. Describe your current public profile and how you might influence others for change. (100 words or less)
12. What models of leadership need to be more carefully explored and why? (100 words or less)

2

Everyone carries both constructive and unconstructive narratives from life about themselves. This, in and of itself, does not exclude you from participating. We are seeking to ensure that you are comfortable sharing your story, are open to coaching, and recognise the benefit in this as a leader moving forward.

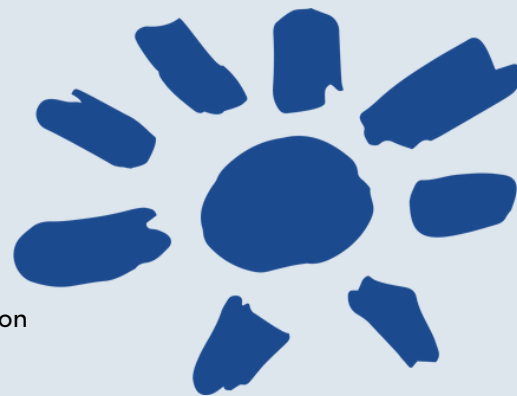
### Step Two: Elevator Pitch Video

Film a two-minute 'elevator pitch'.

Imagine you are in an elevator with members of the selection panel, and you have 120 seconds to convince them as to why you should be selected onto the program.

Please note: submissions that go over two minutes will be automatically disqualified.

## VIDEO TIP SHEET



Creating your 2-minute video for your Homeward Bound application shouldn't require a major production. We do not rate you on your production quality.

Your mobile phone is more than adequate for filming, so we encourage you to use it. Below are some smartphone shooting tips to get you on your way:

- Wipe your lens
- Shoot your video horizontally – best for landscape images seen on YouTube
- Don't use the digital zoom. Sit closer to fill the screen
- Put your phone on airplane mode so that perfect take isn't interrupted by a phone call
- Think about lighting and make sure the light source is in front of you. Film during the day and position your camera in from a window or light source so you face into the light
- Check your sound – film in a quiet environment and take note of background noise – fans or machine noise – before you start filming
- Check your background and position yourself in the centre of the screen. Check for lines and objects behind you that might be in the shot
- There are many free and easy to use apps available if you want to edit your video, but don't get caught up in the process. The selection teams want to get to know about you, not your video editing skills. Try these apps:
  - CapCut.net
  - [gopro.com/en/us/shop/quik-app-video-photo-editor](https://gopro.com/en/us/shop/quik-app-video-photo-editor)
  - [filmora.wondershare.com](https://filmora.wondershare.com)
  - Adobe Premier Rush [www.adobe.com/products/premiere-rush.html](https://www.adobe.com/products/premiere-rush.html)

3

We want you to have fun and see you for who you are, authentically! Some videos have been sent from people riding a horse, in their kitchen, or outside on a hilltop. It is you, your story, and your purpose that matters most.

### Other Tips

Below are some questions for you to think about answering in your own unique way in your Elevator Pitch (note: these do not need to be answered sequentially, nor do they all need to be answered - they are to guide you):

- Why you for this program? Your story so far.
- Why leadership matters to you.
- Why women in leadership roles matter.
- What you've done with your STEMM background.
- Examples of where you've already contributed to the globe, and the outcome.
- What additional 'skills' you bring (musician, artist, yoga instructor, etc.)
- Something unique about you – something about you that says 'Hey, this is what I will do for the cohort, for our world'.
- How you will take the knowledge/expertise you've built in the program out into the world.
- How you are in a position to influence decision-making for the greater good.

You can submit your application via the Homeward Bound submission portal here:

[homewardbound.submittable.com/submit](https://homewardbound.submittable.com/submit)

**We look forward to getting to know you better through your application – best of luck!**